

Trafalgar Avenue, London, SE15 6NP

A lower-level mid-terrace, recently refurbished, two bedroom Victorian apartment located in Bermondsey opposite the greenery of Burgess Park.

The property boasts a spacious and modern kitchen and dining room leading to the naturally bright sitting room, complete with a sky-light, with access to the large and well-kept private garden that has an unobstructed rear towards Burgess Park. Boasting a sleek bathroom and two double bedrooms, one with built in storage.

A short walk away from a plethora of local amenities such as restaurants, supermarket, cafés and bars as well as a bus route on the doorstep and a walk to South Bermondsey station.

Council Tax Band B

£2,100 Per month

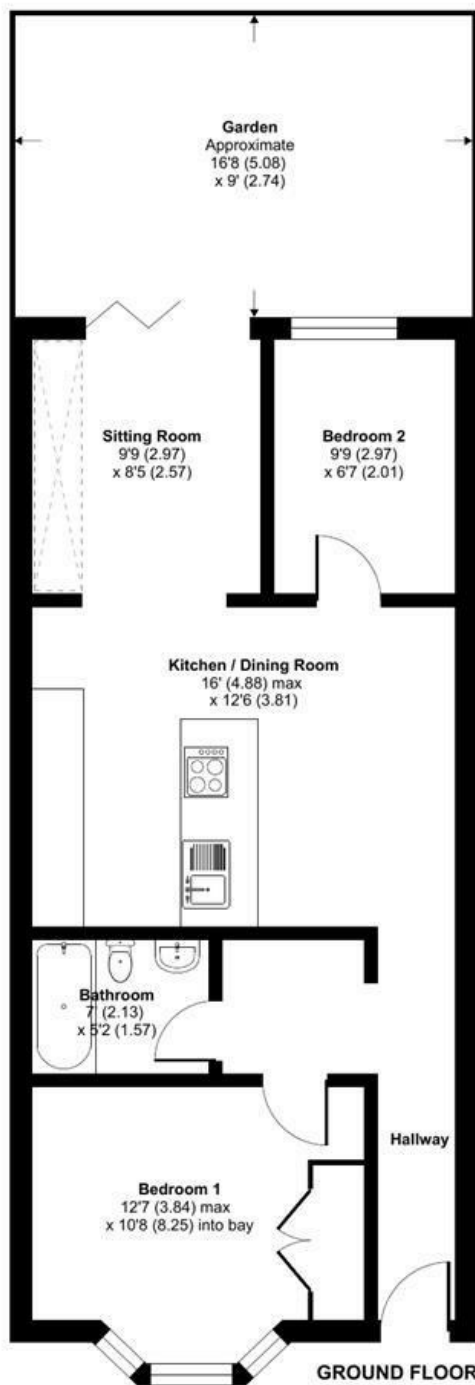
- Victorian Property
- Large Private Garden
- Skylight
- Garden Flat
- Recently Refurbished
- Period Features
- Furnished

Alex & Matteo
ESTATE AGENTS

Trafalgar Avenue, London, SE15

Approximate Area = 627 sq ft / 58.2 sq m

For identification only - Not to scale



Alex & Matteo
ESTATE AGENTS



**Certified
Property
Measurer**

Floor plan produced in accordance with RICS Property Measurement Standards incorporating International Property Measurement Standards (IPMS2 Residential). © nitchcom 2024. Produced for Alex & Matteo Estate Agents. REF: 1148240

Energy Efficiency Rating		
	Current	Potential
Very energy efficient - lower running costs		
(92 plus) A		
(81-91) B	79	79
(69-80) C		
(55-68) D		
(39-54) E		
(21-38) F		
(1-20) G		
Not energy efficient - higher running costs		
England & Wales		
EU Directive 2002/91/EC		